



The Right Balance Between Wool & Meat

309 GullenGamble Road Yeoval NSW 2868

Mark and Kym Kerin (Principal)
P: 0268 464 252 M: 0427 464 252
E: gullen@bordnet.com.au

Dan Veer (Manager) M: 0439 851 970
E: theveers@outlook.com

www.gullengamblemerinos.com.au

GULLENGAMBLE ON-PROPERTY FIELD DAY. 6 SEPTEMBER | 10AM – 4PM.

Come and listen to some of the sheep and wool industry's most interesting core sources:

FEATURING:

- Display of 2019 Sale Rams
- Sires
- Ewes
- Tour of drought lot containment feeding

SPEAKERS INCLUDE:

- **Don Macdonald** – Woolbroker and Director on AWI Ltd Board – traceability and sustainability of the wool industry.
- **Brett Stockings** – 2019 Peter Westblade Scholarship recipient – demand and supply of sheep meat.
- **Mark Kerin** – Principal - GullenGamble Poll Merinos – The positives & negatives of what we have learnt over the past 2 years of drought lot containment feeding.

FOR MORE INFORMATION OR TO RSVP -
PLEASE CONTACT:

DAN VEER 0439851970 E: theveers@outlook.com

2019 Displays and Field Days:

Sat 3 August – Nyngan Ag Expo @ Nyngan Showground

Sat 10 August - Bathurst Ram Expo @ Bathurst Showground

Wed 28-29 August – National Merino Sheep Show @ Dubbo Showground

Tues 3 September – South West Slopes Stud Merino Breeders Field Day @ Harden Showgrounds.

Fri 6 September – On-Property Field Day @ “GullenGamble” 10-4

Tues 17 September
On-Property Ram Sale
@ “GullenGamble” Yeoval.
Display 10am - Sale at 1pm.

Enquiries Always Welcome

GullenGamble Merinos continues to benchmark against our peers; actively measuring traits via ASBVs in SheepGenetics Merino Select and also by participating in Sire Evaluations.

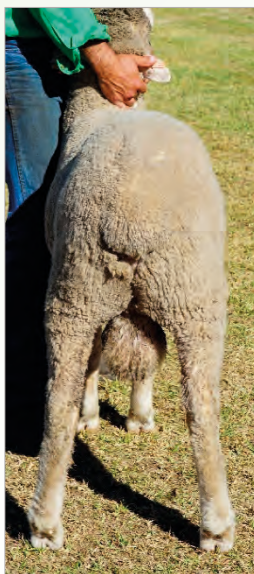
In the recently completed MerinoLink Limited Sire Evaluation -2016 drop - GG Generator (GG 121070) **topped** the clean fleece weight (CFW) combined visual and measured performance indexes and was trait leader in all indexes FP, MP, DP and DP+. He was also **Number 1** in Classers Tops to Culls index out of the 12 teams entered.

We are currently participating in the MLP at Trangie with GG 014189 entered. GG 014189 has the 2nd highest CFW and is also a trait leader for staple length and breech wrinkle out of the 16 teams entered. **We are The Quiet Achievers.....**



OUR SIRES IN THE SPOTLIGHT:

GG 181487 PP x A140474



“He’s Got The Lot”. If it is growth, muscle, fat, woolcut and fertility you want - GG181487 PP has it all in one package! This outstanding ram is in the top 1% of his peers for YWT 11 (early growth), YEMD 3.2, Top 5% for YFAT, YCFW and YSL and is a trait leader in the MP, DP and DP+ indexes. He’s Got The Lot - is a perfect example of ‘The Right Balance Between Wool and Meat’ that GullenGamble is noted for - with industry leading figures for the major profit driving traits of wool and meat. Not only that; he is an extremely well covered sire with a rich, deeply crimped and well-nourished wool, and is structurally correct.

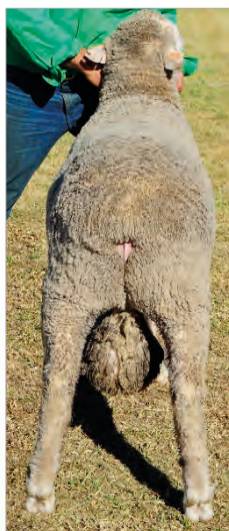
Merino ASBV's – 21/06/2019

	YWT	YEMD	YFAT	YCFW	YSL	YSS	POLL	FP	FP+	MP	MP+	DP	DP+
GG181487	11.0 72%	3.2 65%	1.4 59%	30.3 69%	20.0 75%	0.1 70%	PP	127 36%	135 46%	154 33%	158 43%	149 27%	185 40%
Averages	4.1	0.3	0.1	12.2	5.8	0.3	0	126	129	133	136	126	137

Test Date	MIC	SD	CV	CF	SPIN	BW
01/07/2019	20.4	2.8	13.7	100	18.8	98kg

 = trait leader

GG 181413 PH x A110330



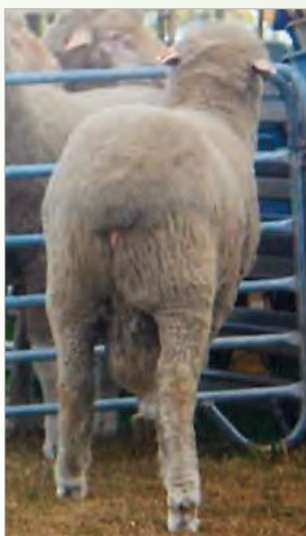
GG181413 was the “1” who stood out at a young age. He had that extra stretch and depth in his carcase, giving him the extra surface area to cut higher fleece weight; with YCFW 41.4 and YWT 13.3 in the top 1% on the data base. He is a trait leader in MP, MP+, DP and DP+ indexes. GG181413 will be extremely useful both to the breeder who wants to shear maximum kgs of wool and still be able to sell wether lambs at an early age, as well as to the breeder who wants to be able to join his ewe lambs at an early age; as his head and muzzle show great fertility. **Note: when we get a general break in the season on the eastern seaboard, we will see merino ewe prices hit new records – so be ready with as many young and old ewes as possible to take advantage of the re-stocker rush – it won't last forever!**

Merino ASBV's – 21/06/2019

	YWT	YEMD	YFAT	YCFW	YSL	YSS	POLL	FP	FP+	MP	MP+	DP	DP+
GG181413	13.3 74%	0.4 68%	0.5 62%	41.4 68%	17.8 72%	5.9 69%	PH	127 36%	127 48%	161 33%	160 47%	155 28%	163 46%
Averages	4.1	0.3	0.1	12.2	5.8	0.3	0	126	129	133	136	126	137

Test Date	MIC	SD	CV	CF	SPIN	BW
01/07/2019	21.5	3.6	15.5	98.8	20.2	100kg

 = trait leader

GG 181494 PP x A140474

GG181494 PP is in the top 1% on the database for YWT 12.4 indicating quick and early growth traits and he is also in the top 5% YEMD 2.7 and YCFW 27.8.

This superb ram is another example of 'The Right Balance Between Wool and Meat'; with accomplished carcase figures and still with plenty of quality and quantity of fibre to be able to take advantage of the many market options breeders choose to target.

GG181494 PP is a trait leader in MP, MP+, DP and DP+ indexes for a reason! He has an outstanding hind quarter and butt shape, indicative of leading in the YEMD trait to produce lambs that have a higher lean meat yield.

Merino ASBV's – 21/06/2019

	YWT	YEMD	YFAT	YCFW	YSL	YSS	POLL	FP	FP+	MP	MP+	DP	DP+
GG181494	12.4 74%	2.7 68%	1.2 63%	27.8 69%	15.1 75%	0.0 70%	PP	123 36%	134 48%	152 34%	158 47%	156 28%	186 45%
Averages	4.1	0.3	0.1	12.2	5.8	0.3	0	126	129	133	136	126	137

Test Date	MIC	SD	CV	CF	SPIN	BW
01/07/2019	20.5	2.8	13.5	99.8	18.9	99kg

 = trait leader

GG 181442 x A140474

GG181442 is another exemplary example of growth, muscle fat and fertility. He is structurally correct, has a great hindquarter and carries his meat well down his back. He is a sire with real doing ability, with his head and his muzzle showing this trait as well as strong fertility.

Merino ASBV's – 21/06/2019

	YWT	YEMD	YFAT	YCFW	YSL	YSS	POLL	FP	FP+	MP	MP+	DP	DP+
GG181442	10.3 71%	2.2 64%	0.7 58%	19.9 65%	10.1 71%	1.7 66%		131 33%	137 42%	150 31%	156 42%	149 26%	174 40%
Averages	4.1	0.3	0.1	12.2	5.8	0.3	0	126	129	133	136	126	137

Test Date	MIC	SD	CV	CF	SPIN	BW
01/07/2019	20.6	3.0	13.7	99.8	19.8	95kg

 = trait leader

GG 150891 x WP130518



GG150891 is a proven sire. He is a lower set sheep with plenty of body weight and is best suited to a frame ewe that requires coverage. He has a well-nourished, bright white, deeply crimped wool and is a real bale filler; with YCFW 39.7 in the top 1% of the database.

Merino ASBV's – 21/06/2019

	YWT	YEMD	YFAT	YCFW	YSL	YSS	POLL	FP	FP+	MP	MP+	DP	DP+
GG150891	2.9 96%	-1.6 93%	-1.3 91%	39.7 84%	17.5 92%	4.0 90%		157 49%	174 56%	171 44%	192 48%	133 36%	167 40%
Averages	4.1	0.3	0.1	12.2	5.8	0.3	0	126	129	133	136	126	137

Test Date	MIC	SD	CV	CF	SPIN	BW
01/07/2019	17.7	3.1	17.5	99.8	16.8	122kg

 = trait leader

GG 170565 x GG150891



Merino ASBV's – 21/06/2019

	YWT	YEMD	YFAT	YCFW	YSL	YSS	POLL	FP	FP+	MP	MP+	DP	DP+
GG170565	4.8 72%	-2.0 66%	-1.2 61%	28.0 60%	13.8 65%	4.0 60%	PH	150 33%	163 36%	161 31%	176 31%	138 27%	154 29%
Averages	4.1	0.3	0.1	12.2	5.8	0.3	0	126	129	133	136	126	137

Test Date	MIC	SD	CV	CF	SPIN	BW
01/07/2019	16.3	2.9	15.9	100	15.5	120kg


 = trait leader

GG170565 is one of the top sons of GG150891. Like his father; he has a well-nourished, bright white, deeply crimped wool and plenty of it quality and quantity all bundled together in the one ram! Yet another great example of 'The Right Balance Between Wool and Meat'.

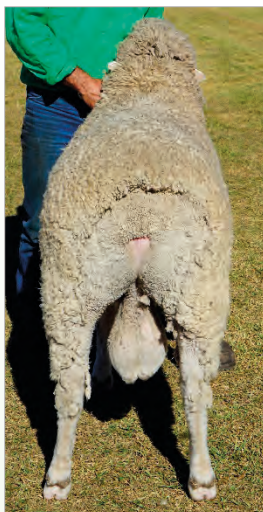
GG 170787 PP x RRJ150092**Merino ASBV's – 21/06/2019**

	YWT	YEMD	YFAT	YCFW	YSL	YSS	POLL	FP	FP+	MP	MP+	DP	DP+
GG170787	9.0 72%	-1.1 67%	-1.0 62%	18.7 61%	8.9 66%	2.7 61%	PP	141 33%	154 38%	157 31%	168 34%	151 27%	160 32%
Averages	4.1	0.3	0.1	12.2	5.8	0.3	0	126	129	133	136	126	137

Test Date	MIC	SD	CV	CF	SPIN	BW
01/07/2019	16.2	1.8	11.4	100	14.7	138kg

 = trait leader

GG170787 PP is best suited as a wool sire as he has both quantity and a quality wool that is very white, well-nourished and deeply crimped and he has an outstanding structure. This solid ram is suited to higher rainfall areas and is noted as a trait leader in 6 industry indexes.

GG 170793 PP x RRJ150092

GG170793 PP is a great all-rounder ram who could be used over wool or frame ewes. He too, has "The Right Balance Between Wool and Meat", with excellent structure, a great masculine muzzle, considerable hindquarters and he carries a great load of meat down his back end. GG170793 PP is a trait leader in 5 of the industry indexes.

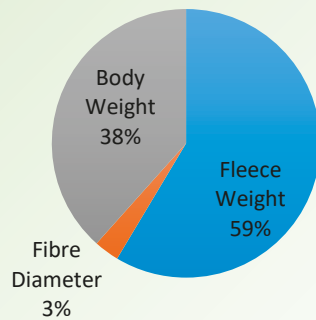
Merino ASBV's – 21/06/2019

	YWT	YEMD	YFAT	YCFW	YSL	YSS	POLL	FP	FP+	MP	MP+	DP	DP+
GG170793	7.8 72%	-0.5 67%	-1.1 62%	27.4 61%	9.5 66%	3.2 61%	PP	136 33%	154 38%	157 31%	173 34%	145 27%	168 32%
Averages	4.1	0.3	0.1	12.2	5.8	0.3	0	126	129	133	136	126	137

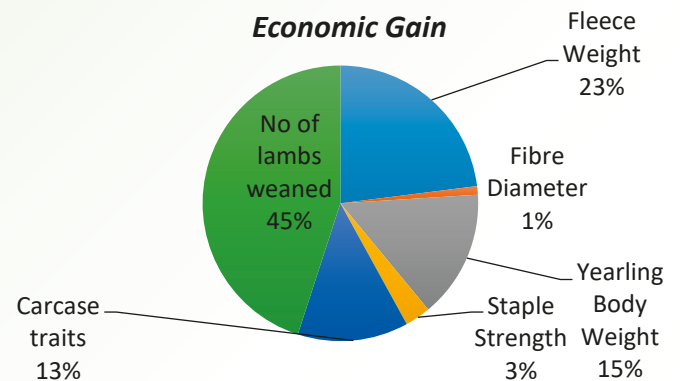
Test Date	MIC	SD	CV	CF	SPIN	BW
01/07/2019	18.9	2.8	14.6	100	17.5	134kg

After 10 years of using either the DP or DP+ index you would be likely to get the following gains in production:

DP Index - Contribution to Economic Gain

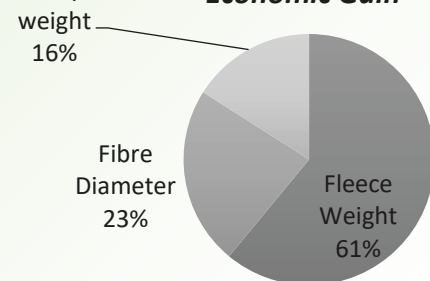


DP+ Index - Contribution to Economic Gain

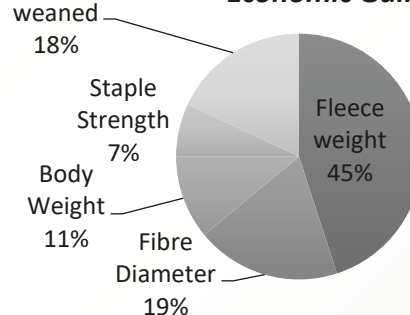


After 10 years of using either the MP or MP+ index you would be likely to get the following gains in production:

MP Index - Contribution to Economic Gain

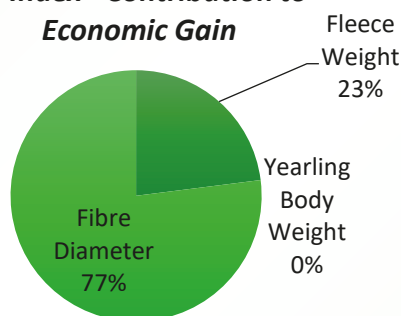


MP+ Index - Contribution to Economic Gain

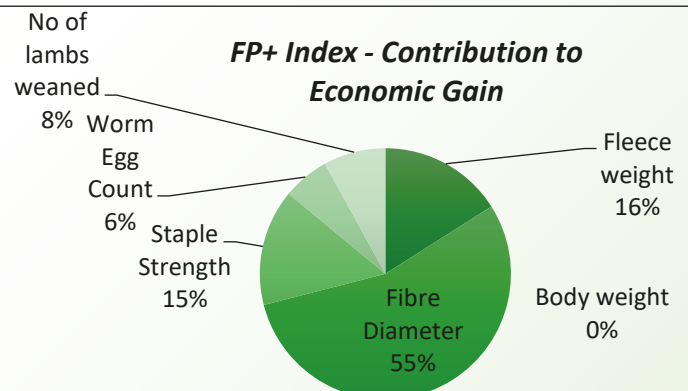


After 10 years of using either the FP or FP+ index you would be likely to get the following gains in production:

FP Index - Contribution to Economic Gain



FP+ Index - Contribution to Economic Gain



Dual Purpose Plus (DP+) – Based on a meat focused production system where surplus progeny are sold as lambs & a portion of ewes are joined to terminal sires.

*Large ↑ in body weight & carcase traits. *Moderate ↑ in fleece weight. *Maintain fibre diameter & staple length. *Moderate ↑ in reproduction

Merino Production Plus (MP+) – Based on a balanced wool & meat production system where surplus progeny are sold as hoggets.

*Balanced emphasis on ↑ fleece weight and ↓ in fibre diameter. *Moderate ↑ in body weight, with little change in reproduction.

Fibre Production Plus (FP+) –

Based on a wool production system where wethers are retained, operating in an environment where worms cause economic losses. *Large ↓ in fibre diameter. *Moderate ↑ in staple length. *Small ↑ in fleece weight. *Little change in body weight and reproduction.